



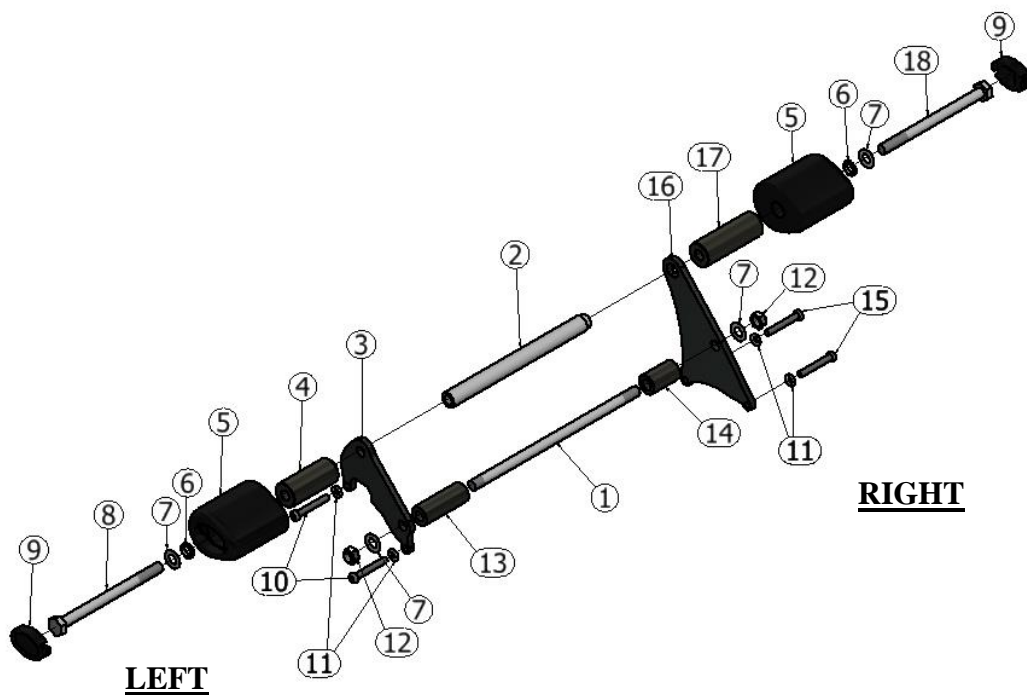
FITTING INSTRUCTIONS FOR CP0412BL
AERO CRASH PROTECTORS KAWASAKI Z125 2016-



THIS KIT CONTAINS THE ITEMS PICTURED AND LABELLED BELOW.
DO NOT PROCEED UNTIL YOU ARE SURE ALL PARTS ARE PRESENT.

Please note that the way the kit is packed does not necessarily represent the way of mounting to the bike.

THE PARTS SHOWN MAY BE REPRESENTATIVE ONLY (FOR CLARITY OF INSTRUCTIONS ONLY).





LEGEND

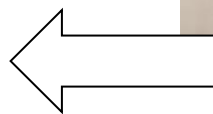
- ITEM 1 = ENGINE BAR (EB085) (x1)
- ITEM 2 = MOUNTING BAR (M0491) (x1)
- ITEM 3 = LHS MOUNTING PLATE (MP0168) (x1)
- ITEM 4 = SPACER 58mm (S0006) (x1)
- ITEM 5 = CRASH PROTECTOR BOBBIN (B0061 with CS341) (x2)
- ITEM 6 = M10 SHAKE-PROOF WASHERS (x2)
- ITEM 7 = M10 WASHERS (x4)
- ITEM 8 = M10 x 120mm HEX HEAD BOLT (x1)
- ITEM 9 = CRASH PROTECTOR CAPS (BC0002) (x2)
- ITEM 10 = M6 x 30mm BUTTON HEAD BOLTS (x2)
- ITEM 11 = M6 WASHERS (x4)
- ITEM 12 = M10 NYLOC NUTS (x2)
- ITEM 13 = SPACER 55mm (S0991) (x1)
- ITEM 14 = SPACER 35mm (S0264) (x1)
- ITEM 15 = M6 x 40mm BUTTON HEAD BOLTS (x2)
- ITEM 16 = RHS MOUNTING PLATE (MP0169) (x1)
- ITEM 17 = SPACER 71.5mm (S0190) (x1)
- ITEM 18 = M10 x 130mm HEX HEAD BOLT (x1)

Please note that in cases where kits are packed with rubber washers holding the components onto the bolt – *the rubber washers should be thrown away!*

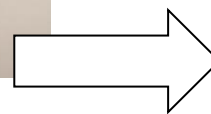
TOOLS REQUIRED

- socket set to include 8mm, 14mm and 17mm and a wrench.
 - 14mm and 17mm spanner
 - Metric Allen key to include 4mm
 - Torque wrench (up to 40N/m).

TOWARDS REAR
OF BIKE



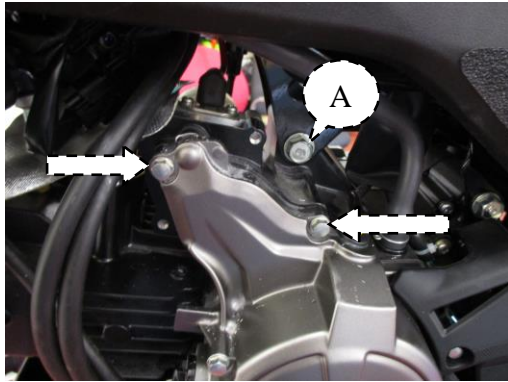
TOWARDS FRONT
OF BIKE



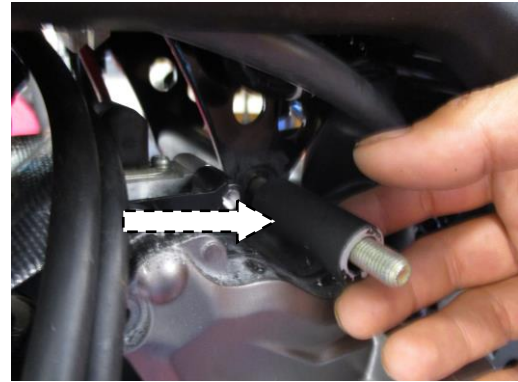
PICTURE C

GENERAL TORQUE SETTINGS

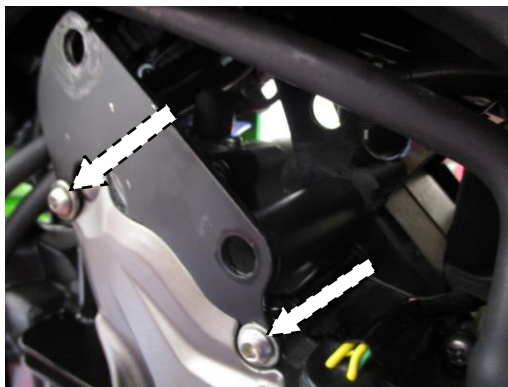
- M4 BOLT = 8Nm
- M5 BOLT = 12Nm
- M6 BOLT = 15Nm
- M8 BOLT = 20Nm
- M10 BOLT = 40Nm



PICTURE 1



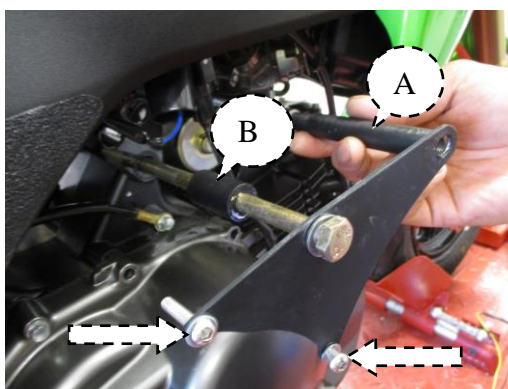
PICTURE 2



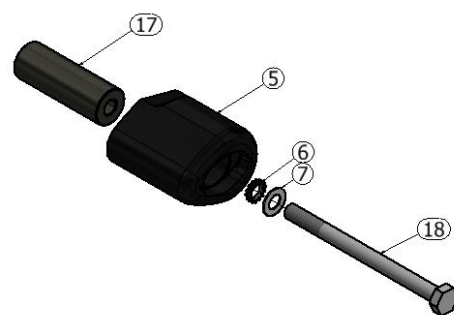
PICTURE 3



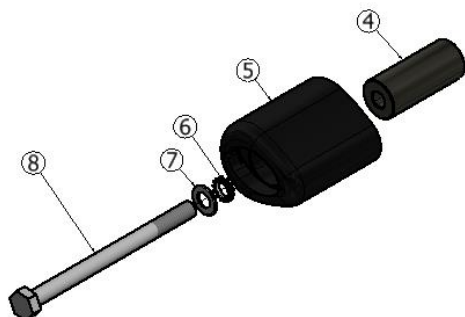
PICTURE 4



PICTURE 5



PICTURE 6



PICTURE 7

FITTING INSTRUCTIONS

- Starting from the LHS of the bike, using a 14mm socket and a wrench on one side and a 14mm spanner on the other side remove the engine bolt labelled A in Picture 1.
- Using an 8mm socket and a wrench, remove the engine case bolts arrowed in picture 1.
- From the kit, take the engine bar (item 1) and insert it through the engine mount. Insert the 55mm long spacer to the exposed end of the engine bar just fitted on the LHS as shown in picture 2.
- Place the LHS mounting plate (MP0168) from the kit on the LHS engine case as shown in picture 3. Also ensure that exposed end of the engine bar is inserted onto the mounting plate.
- Mount the mounting plate with two M6 x 30mm button head bolts (Item 10) with M6 washers (item 11) as arrowed in picture 3. Tighten both bolts to 10Nm.
- Place an M10 washer (item 7) and an M10 nyloc nut (item 12) on the exposed end of the engine bar on the LHS. Do not fully tighten the nut at this stage.
- On the RHS, remove the two engine case bolts arrowed in picture 4. Insert a 35mm long spacer (item 14) through the exposed end of the engine bar on the RHS. Labelled B in picture 5.
- From the kit, take the Mounting bar (item 2) and the RHS Mounting plate (item 16). Insert the 'D' shaped end of the mounting bar (item 2) into the 'D' shaped hole on the mounting plate (item 16). Offer the assembly towards the RHS of the engine so that the mounting bar (item 2) is clamped between the two mounting plates. Ensure that the RHS exposed end of the engine bar (item 1) is also inserted onto the mounting plate.
- Insert an M10 washer (item 7) and an M10 nyloc nut on the exposed engine bar (item 1) on the RHS. Do not fully tighten the nut at this stage.
- Mount the RHS mounting plate onto the engine case using two M6 x 40mm button head bolts (item 15) and two M6 washers (item 11) as arrowed in picture 5. Tighten the two M6 bolts to 10Nm.
- Using a 17mm socket and a torque wrench on one side and a 17mm spanner on the other side, tighten the engine bar nuts to 40 Nm. Ensure that the nyloc nuts are fully engaged with the thread on the engine bar (item 1)
- From the kit, take an M10 x 130mm Hex bolt (item 18), M10 washer (item 7), M10 shock-proof washer (item 6), crash protector bobbin (item 5) and 71.5mm long spacer (item 17). assemble the RHS bobbin as shown in picture 6. Mount the assembly onto the threaded 'D' shaped mounting bar on the RHS, do not fully tighten the bolt at this stage.



- From the kit, take an M10 x 120mm Hex bolt (item 8), M10 washer (item 7), M10 shock-proof washer (item 6), crash protector bobbin (item 5) and 58mm long spacer (item 4). assemble the LHS bobbin as shown in picture 7. Mount the assembly onto the threaded end of the mounting bar on the LHS. Do not fully tighten the bolt at this stage.
- From the RHS bobbin assembly, tighten the crash protector bolt until you feel some compression from inside the protector using a 17mm socket and a torque wrench. **PLEASE NOTE THE CRASH PROTECTOR MUST BE POSITIONED AS IN PICTURE 'C' WITH BIGGER END TOWARD FRONT OF BIKE.** Turn a little more so that you feel the compression increase slightly. Then apply a quarter turn. Do not over tighten as damage can occur to the bike. Do not exceed 40N/m of torque.
- Repeat the above procedure to tighten the remaining crash protector to the left side of the bike.
- Fit crash protector caps into both crash protectors.

ISSUE 1 11/10/2016 (HH)

CONSUMER NOTICE

The catalogue description and any exhibition of samples are only broad indications of the Products and R&G may make design changes which do not diminish their performance or visual appeal and supplying them in such state shall conform to the order. The Buyer acknowledges no representation or warranty (other than as to title) has been given or will apply to the Products other than those in R&G's order or confirmation and the Buyer confirms it has chosen the Products as being of merchantable quality and suitable for its particular purposes. Where R&G fits the Products or undertakes other services it shall exercise reasonable skill and care and rectify any fault free of charge unless the workmanship has been disturbed. The Buyer is responsible for ensuring that the warranty on the motorcycle is not affected by the fitting of the Products. On return of any defective Products R&G shall at its option either supply a replacement or refund the purchase money but shall not be liable if the Products have been modified or used or maintained otherwise than in accordance with R&G's or manufacturer's instructions and good engineering practice or if the defect arises from accident or neglect. Other than identified above and subject to R&G not limiting its liability for causing death and personal injury, it shall not be liable for indirect or consequential loss and otherwise its liability shall be limited to the amounts paid by the Buyer for the Products or the fitting or service concerned. These terms do not affect the Buyer's statutory rights.

R&G RACING RETURNS POLICY (NON-FAULTY GOODS)

Returns must be pre-authorized (if not pre-authorized the return will be rejected). Goods may only be returned direct to us if they were purchased direct from us (customer must prove if necessary). Otherwise to be returned to original vendor. Goods must be in re-sellable condition, in the opinion of R&G Racing. All returns are subject to a 25% restocking and handling fee (25% of the gross value exc. P&P – at the prevailing price at time of purchase). The customer must pay any and all carriage charges. No returns of discontinued products, unless within 14 days of purchase. This policy does not affect your statutory rights and does not refer to faulty goods.



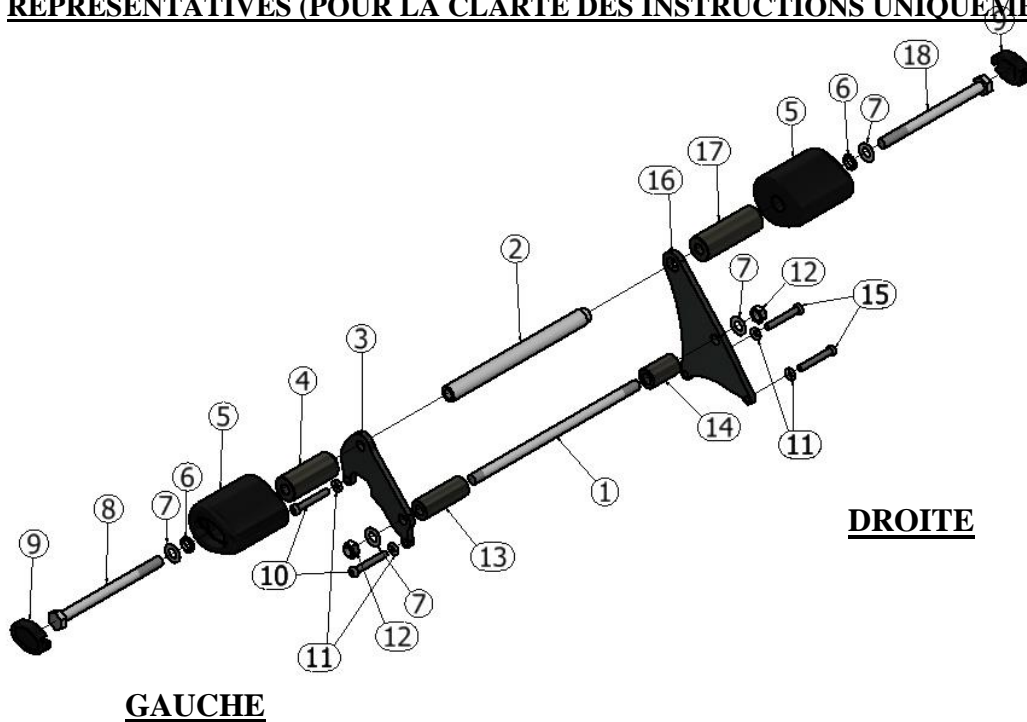
NOTICE DE MONTAGE CP0412BL
PROTECTIONS CRASHKAWASAKI Z125 2016-



Le kit contient les articles exposés ci-dessous, vérifier que toutes les pièces soient présentes avant de procéder au montage.

La façon dont le kit est emballé ne correspond pas forcément à la façon de monter les pièces sur la moto.

LES PARTIES PRESENTEES PEUVENT ETRE UNIQUEMENT REPRESENTATIVES (POUR LA CLARTE DES INSTRUCTIONS UNIQUEMENT).





LEGENDE

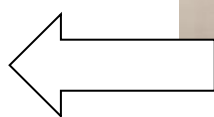
- ARTICLE 1 = AXE MOTEUR (EB085) (x1)
 ARTICLE 2 = BARRE DE FIXATION (M0491) (x1)
 ARTICLE 3 = PLAQUE DE FIXATION COTE GAUCHE (MP0168) (x1)
 ARTICLE 4 = ENTRETOISE 58mm (S0006) (x1)
 ARTICLE 5 = BOBINE DE PROTECTION CRASH (B0061 avec CS341) (x2)
 ARTICLE 6 = M10 RONDELLES ANTI VIBRATION (x2)
 ARTICLE 7 = M10 RONDELLES (x4)
 ARTICLE 8 = M10 x 120mm BOULON (x1)
 ARTICLE 9 = CAPUCHONS DE PROTECTION CRAH (BC0002) (x2)
 ARTICLE 10 = M6 x 30mm BOULONS (x2)
 ARTICLE 11 = M6 RONDELLES (x4)
 ARTICLE 12 = M10 ECROUS (x2)
 ARTICLE 13 = ENTRETOISE 55mm (S0991) (x1)
 ARTICLE 14 = ENTRETOISE 35mm (S0264) (x1)
 ARTICLE 15 = M6 x 40mm BOULONS (x2)
 ARTICLE 16 = PLAQUE DE FIXATION COTE DROIT (MP0169) (x1)
 ARTICLE 17 = ENTRETOISE 71.5mm (S0190) (x1)
 ARTICLE 18 = M10 x 130mm BOULON (x1)

Notez que si les kits sont emballés avec des rondelles en caoutchouc servant à tenir les composants, *ces rondelles doivent être jetées!*

TOOLS REQUIRED

- Clé à pipe 8mm, 14mm et 17mm.
- Clé plate 14mm et 17mm
 - Clé Allen de 4mm
- Clé dynamométrique (à 40N/m).

ARRIERE MOTO
MOTO



AVANT
MOTO

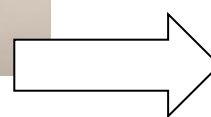


PHOTO C

COUPLES DE SERRAGE RECOMMANDES

- M4 BOULON = 8Nm
 M5 BOULON = 12Nm
 M6 BOULON = 15Nm
 M8 BOULON = 20Nm
 M10 BOULON = 40Nm

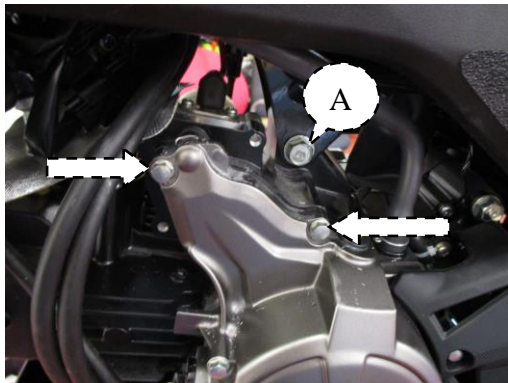


PHOTO 1



PHOTO 2

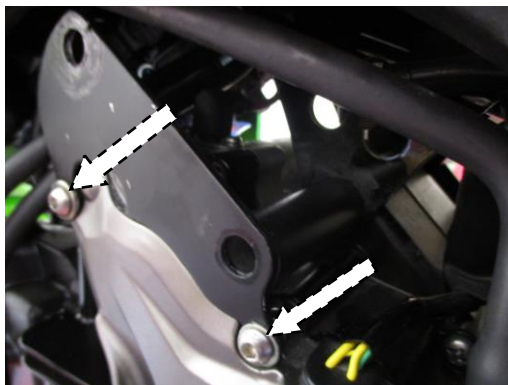


PHOTO 3



PHOTO 4

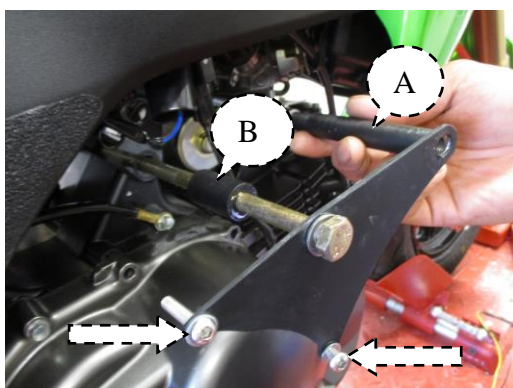


PHOTO 5

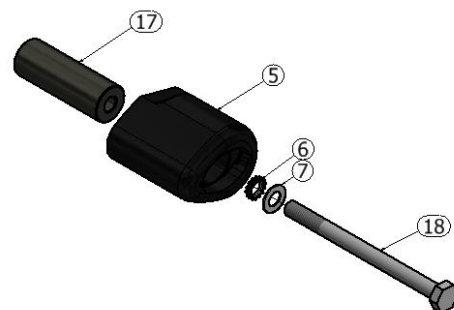


PHOTO 6

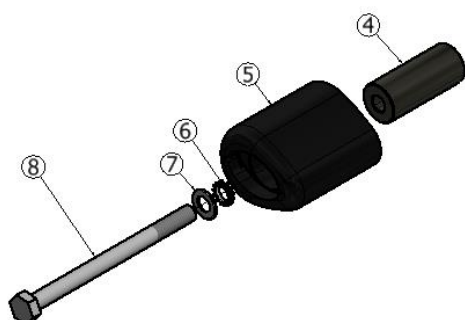


PHOTO 7

NOTICE DE MONTAGE

- En commençant du coté gauche de la moto, et en utilisant une clé à pipe de 14mm d'un coté et une autre de 14mm de l'autre coté, enlever le boulon moteur étiqueté A sur la Photo 1.
- En utilisant une clé à pipe de 8mm, enlever les boulons de carter moteur indiqués sur la photo 1.
- Dans le kit, prendre l'axe moteur (article 1) et insérez le dans le support moteur. Insérer l'entretoise de 55mm sur l'extrémité de l'axe moteur tout juste monté du coté gauche, voir photo 2.
- Placer la plaque de fixation du coté gauche (MP0168) du kit sur le carter moteur du coté gauche, voir photo 3. Veiller à ce que l'extrémité de l'axe moteur soit inséré dans la plaque de fixation.
- Monter la plaque de fixation avec 2 boulons M6 x 30mm (Article 10) et rondelles M6 (article 11) voir photo 3. Serrer les 2 boulons à 10Nm.
- Placer une rondelle M10 (article 7) et un écrou M10 (article 12) sur l'extrémité de l'axe moteur du coté gauche. Ne pas serrer complètement l'écrou à ce stade.
- Du coté droit, enlever les 2 boulons de carter moteur indiqués sur la photo 4. Insérer une entretoise de 35mm (article 14) dans l'extrémité de l'axe moteur du coté droit, étiqueté B sur la photo 5.
- Dans le kit, prendre l'axe de fixation (article 2) et la plaque de fixation coté droit (article 16). Insérer l'extrémité en 'D' de l'axe de fixation (article 2) dans le trou en 'D' de la plaque de fixation (article 16). Monter l'ensemble contre le coté droit du moteur de façon à ce que l'axe de fixation (article 2) soit pris entre les 2 plaques de fixation. Veiller à ce que l'extrémité du coté droit de l'axe moteur (article 1) soit aussi insérer dans la plaque de fixation.
- Insérer une rondelle M10 (article 7) et un écrou M10 sur l'axe moteur (article 1) du coté droit. Ne pas serrer complètement à ce stade.
- Monter la plaque de fixation du coté droit sur le carter moteur à l'aide de 2 boulons M6 x 40mm (article 15) et 2 rondelles M6 (article 11) voir photo 5. Serrer les 2 boulons M6 à 10Nm.



- Utiliser une Clé avec douille de 17mm et une clé dynamométrique d'un coté et une clé à molette de 17mm de l'autre coté, serrer les écrous d'axe moteur à 40 Nm. Veiller à ce que les écrous soient complètement engagés dans le filetage de l'axe moteur (article 1)
- Dans le kit, prendre un boulon M10 x 130mm (article 18), une rondelle M10 (article 7), une rondelle anti vibration M10 (article 6), une bobine de protection crash (article 5) et une entretoise de 71.5mm (article 17). Assembler la bobine du coté droit, voir photo 6. Monter l'ensemble sur l'axe moteur fileté en forme de 'D' du coté droit, ne pas serrer complètement le boulon à ce stade.
- Dans le kit, prendre un boulon M10 x 120mm (article 8), une rondelle M10 (article 7), une rondelle anti vibration M10 (article 6), la bobine de protection crash (article 5) et une entretoise 58mm (article 4). Assembler la bobine du coté gauche, voir photo 7. Monter l'ensemble sur l'extrémité fileté de l'axe de fixation du coté gauche. Ne pas serrer le boulon complètement à ce stade.
- Sur l'assemblage de bobine du coté droit, serrer le boulon de protection crash jusqu'à ce que vous sentiez la compression s'accroître dans la protection, en utilisant une clé de 17mm. **LA PROTECTION DOIT ETRE POSITIONNEE COMME EN "C" AVEC LE COTE ARRONDI LE PLUS GROS EN DIRECTION DE L'AVANT DE LA MOTO.** Tourner un peu plus afin d'accroître légèrement la compression. Faire un quart de tour. Pas plus de 40 Nm de couple - Ne pas trop serrer, au risque d'abîmer les composants.
- Répéter la procédure ci-dessus pour serrer la protection crash restant du coté gauche de la moto.
- Insérer les capuchons des protections dans les protections.

ISSUE 1 11/10/2016 (HH)

CONSUMER NOTICE

The catalogue description and any exhibition of samples are only broad indications of the Products and R&G may make design changes which do not diminish their performance or visual appeal and supplying them in such state shall conform to the order. The Buyer acknowledges no representation or warranty (other than as to title) has been given or will apply to the Products other than those in R&G's order or confirmation and the Buyer confirms it has chosen the Products as being of merchantable quality and suitable for its particular purposes. Where R&G fits the Products or undertakes other services it shall exercise reasonable skill and care and rectify any fault free of charge unless the workmanship has been disturbed. The Buyer is responsible for ensuring that the warranty on the motorcycle is not affected by the fitting of the Products. On return of any defective Products R&G shall at its option either supply a replacement or refund the purchase money but shall not be liable if the Products have been modified or used or maintained otherwise than in accordance with R&G's or manufacturer's instructions and good engineering practice or if the defect arises from accident or neglect. Other than identified above and subject to R&G not limiting its liability for causing death and personal injury, it shall not be liable for indirect or consequential loss and otherwise its liability shall be limited to the amounts paid by the Buyer for the Products or the fitting or service concerned. These terms do not affect the Buyer's statutory rights.

R&G RACING RETURNS POLICY (NON-FAULTY GOODS)

Returns must be pre-authorized (if not pre-authorized the return will be rejected). Goods may only be returned direct to us if they were purchased direct from us (customer must prove if necessary). Otherwise to be returned to original vendor. Goods must be in re-sellable condition, in the opinion of R&G Racing. All returns are subject to a 25% restocking and handling fee (25% of the gross value exc. P&P – at the prevailing price at time of purchase). The customer must pay any and all carriage charges. No returns of discontinued products, unless within 14 days of purchase. This policy does not affect your statutory rights and does not refer to faulty goods.